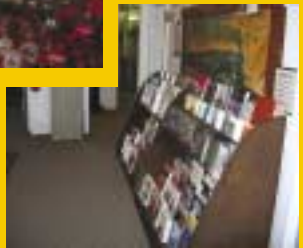


Have you walked in the footsteps of an outlaw?

Have you ever worked 30 days a month for no pay?

Have you ever walked a Main Street and heard 27 different languages?

The early residents of eastern Utah did and you can experience their stories.



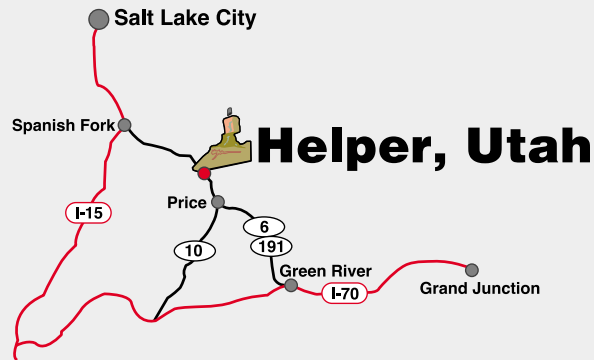
Visit our gift shop for a unique souvenir, educational book or historic photograph reprint. We have a large supply of kids items too.



Western Mining & Railroad Museum

Mining, Railroad & Lifestyle Exhibits
from the Late 1800s to the 1950s

Located in historic Helper, Utah, the Western Mining & Railroad Museum features four floors of artifacts and three outside displays highlighting the coal mining and railroad industry of Eastern Utah.



296 South Main • Helper, Utah 84526
N 39° 40' 58.2" / W 110° 51' 17.0" • 5643 elev.

May 1 - September 30: Mon.-Sat. 10AM~5PM
October 1 - April 30: Tues.-Sat. 11AM~4PM
Admission by Donation

For more information,
call (435) 472-3009
or visit our website at
www.wmrrm.org

Step back in time

at the



Western Mining & Railroad Museum

Mining, Railroad & Lifestyle Exhibits
from the Late 1800s to the 1950s



Snapshots of the past

Helper's history is a wild and exciting one featuring outlaws, lawmen, unions, non-unions, miners, railroaders and more bars and brothels than churches. This history is told at the Western Mining & Railroad Museum.

Here is the story of thousands of immigrants who left their homelands searching for a better life in the Eastern Utah coal camps and railroad towns. Instead they found debt, hardship and some of the worst mine disasters in U.S. history.

Housed in the old Helper Hotel built in 1914, a visit to the Museum transports guests back to the turn of the century. A time when doctors treated everything from toothaches to bullet wounds. School was taught with one teacher, labor unions were trying to get a foot hold and every small camp had a baseball team.

Enjoy the coin operated train sets, the simulated underground coal mine, and the old Helper jail. Spend some time looking at the Museum collection of the 1930s Works Project Administration (WPA) paintings. Commissioned by the Federal Government, this project allowed local artists to work during the Depression.

In the basement – next to the jail – 3 unassuming stairs greet visitors. These are the steps that Butch Cassidy and his Wild Bunch walked up to rob the Castle Gate payroll of \$7000 in 1897.



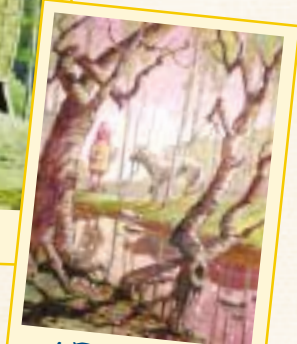
Early "Modern" Medicine



The hi-tech coal fired cooking stove of the past



WPA Painting



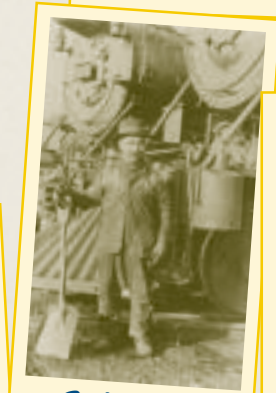
WPA Painting



The Union comes to town



G-scale train



Early Helper railroad worker



Workin' on the Railroad



Infamous outlaws performed daring robberies here.



Mine Rescue Workers



Miners' helmets waiting for the next shift to start